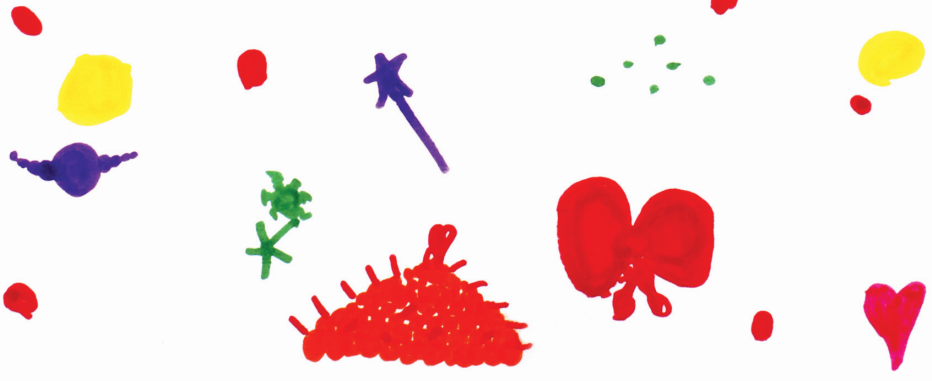


# B is for Believe

- Believe in your self
- Because St. Jude is on your side The fight may be tough But hold your head up with pride It's going to be ok
- Live Life and Believe
- It's ok to cry It will be fine We all have to believe they will find a cure one day Just remember we all have to Believe!



©2013 ALSAC/St. Jude Children's Research Hospital (14253)

B is for Believe  
artwork created by St. Jude patient Micha  
at age 8 | *neuroblastoma*

[stjude.org](http://stjude.org)